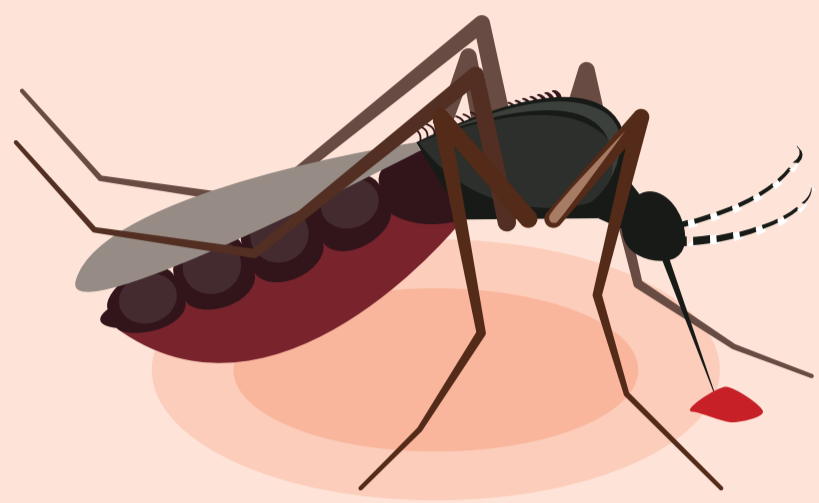


Australian insects: stingers guide

Biters

Biters use their mouths to suck blood. They can infect you with diseases.



Stingers

Stingers inject you with venom, which can trigger an allergic reaction.



Dial triple zero (000) and ask for an ambulance if you suspect that either you or someone else is having a severe allergic reaction



Bees



13-16mm

Honey bees



Key facts

- Keep your distance – honey bees defend their nest aggressively.
- A honey bee's sting will stick in the skin and tear away from the bee.



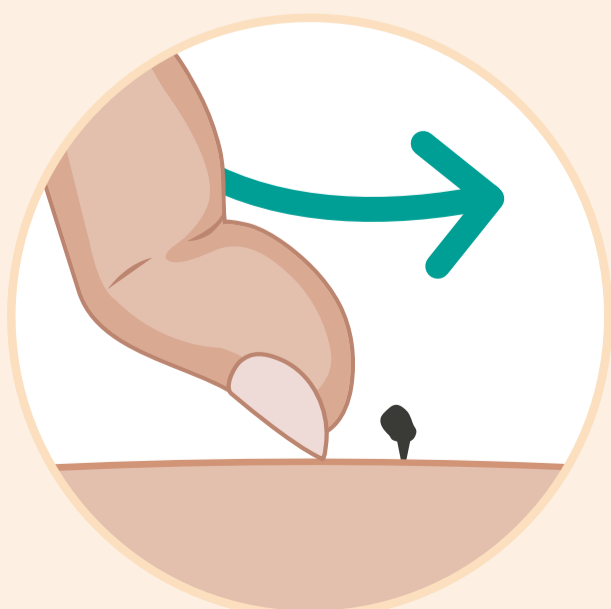
How to recognise a honey bee nest



Hive



Nest



- If stung, scrape the sting out as soon as possible
- Don't try to squeeze out the sting



Stingers

Stingers inject you with venom, which can trigger an allergic reaction.

Wasps



15mm

European wasp



15-19mm

Yellow paper wasp



Key facts

- Wasps may attack a person if they are provoked or their nest is disturbed.
- Wasps can sting many times and, unlike bees, do not leave the sting behind.



How to prevent wasp stings



Cover food and drinks



Tightly close rubbish bins



Don't provoke them



How to recognise a wasp nest



European wasp nest

- Size of a basketball or bigger
- Report to local council for removal
- Appears to be a hole in the ground



Paper wasp nest

- Size of a golf ball
- Consider hiring an expert for removal as they can attack when sprayed
- Usually above ground

Stingers



Stingers inject you with venom, which can trigger an allergic reaction.



Ants



10-25mm

Bull ants



6 mm

Green-head ant



10-15 mm

Jack jumper



Where they are found



Key facts

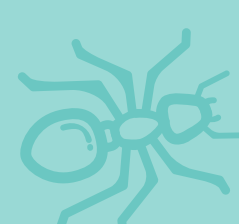
- Stinging ants can cause a severe allergic reaction.
- Bull ants can deliver painful stings and are aggressive
- There are about 90 species of bull ant in Australia.
- The ant most frequently associated with allergic reactions is the Jack Jumper ant.
- Green-head ants have a distinctive odour and their stings can be painful.



How to recognise a bull ant nest



- Bull ants will attack if you get too close to their nest
- They may enter houses that are close to their nest
- They nest outdoors in bushy areas under logs and rocks





Symptoms and treatment

Type of reaction



Local reaction



Severe allergic reaction



Key facts

Most people will have a local reaction after being stung or bitten.

People at risk are advised to have a personal action plan to manage a severe allergic reaction.



Symptoms



Burning pain



Skin swelling



Redness



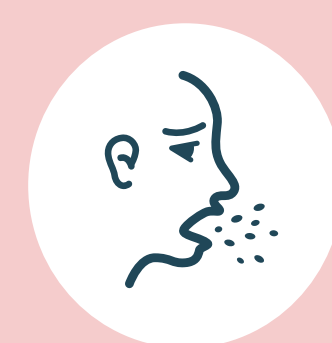
Itching



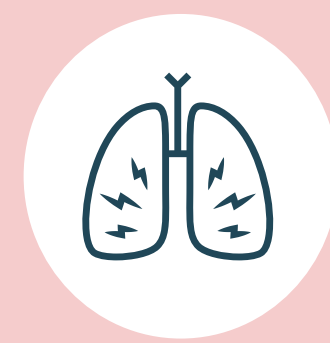
Flushing



Collapsing



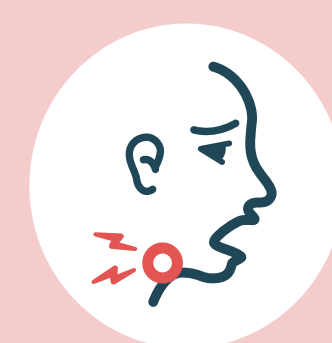
Coughing or wheezing



Difficulty breathing, talking or swallowing



Stomach cramps



Swelling of the mouth, throat or tongue



Itching around the eyes, ears, lips throat or mouth



A rash that may appear anywhere on the body

Have you been bitten or stung?



healthdirect's Symptom Checker can help you decide what to do next

healthdirect.gov.au/symptom-checker



Treatments



Clean stung area



Apply ice pack



Take a painkiller



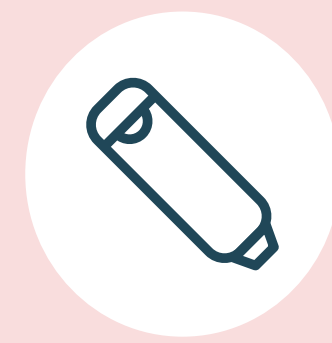
Antihistamine tablets



Call triple zero (000)



Personal action plan



Administer adrenaline via an autoinjector