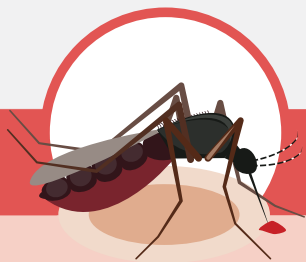


Biters



Biters use their mouths to suck blood. They can infect you with diseases.

Stingers



Stingers inject you with venom, which can trigger an allergic reaction.



Dial triple zero (000) and ask for an ambulance if you suspect that either you or someone else is having a severe allergic reaction

Common stingers

Bees



Honey bees



Key facts

- Keep your distance – honey bees defend their nest aggressively.
- A honey bee's sting will stick in the skin and tear away from the bee.



How to recognise a honey bee nest

13-16mm



Hive



Nest



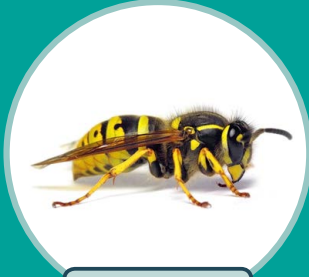
- If stung, remove the sting as soon as possible
- Don't try to squeeze out the sting

Common stingers



Wasps

European wasp



15 mm



Key facts

- Wasps may attack a person if they are provoked or their nest is disturbed.
- Wasps can sting many times and, unlike bees, do not leave the sting behind.



How to prevent wasp stings



Cover food and drinks

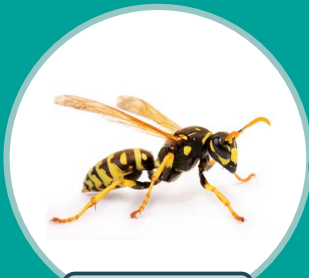


Tightly close rubbish bins



Don't provoke them

Yellow paper wasp



15-19 mm

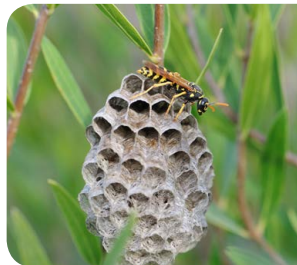


How to recognise a wasp nest



European wasp nest

- Size of a basketball or bigger
- Appears to be a hole in the ground
- Report to local council for removal



Paper wasp nest

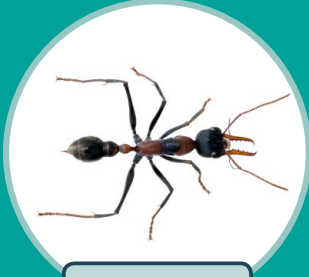
- Size of a golf ball
- Usually above ground
- Hire an expert for removal

Common stingers



Ants

Bull ants



10-25 mm



Key facts

- Stinging ants can cause a severe allergic reaction.
- Bull ants can deliver painful stings and are aggressive.
- There are about 90 species of bull ant in Australia.
- Green-head ants have a distinctive odour and their stings can be painful.



Where they are found

Green-head ant



6 mm

Bull ants



Green-head ant



How to recognise a bull ant nest



- Bull ants will attack if you get too close to their nest
- They may enter houses that are close to their nest
- They nest outdoors in bushy areas under logs and rocks

Symptoms and treatments

Type of reaction



Local reaction



Key fact: Most people will have a local reaction after being stung or bitten.



Severe allergic reaction



Key fact: People at risk are advised to have a personal action plan to manage a severe allergic reaction.

Symptoms



Burning pain



Skin swelling



Redness



Itching



Flushing



Collapsing



Coughing or wheezing



Difficulty breathing, talking or swallowing



Itching around the eyes, ears, lips, throat or mouth



A rash that may appear anywhere on the body

Have you been bitten or stung?

healthdirect's Symptom Checker can help you decide what to do next

www.healthdirect.gov.au/symptom-checker



Swelling of the mouth, throat or tongue



Stomach cramps

Symptoms and treatments

Treatments

Local reaction



Clean stung area



Apply ice pack



Take a painkiller



Antihistamine tablets

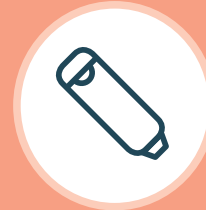
Severe allergic reaction



Call triple zero (000)



Personal action plan



Administer adrenaline via an autoinjector or EpiPen